

## Stakes and risers

### S10

Stake to be used for Rolland sprinklers ref 10-9 and 10-26

To be fitted on metal round of 10 mm or metal tee 20 or 25 mm

Use connections J and D on drip or PEBD pipes.

Use connection R10 on PEHD pipes

S1006J = S10 stake + 0.60 m pipe + Connection JCP10

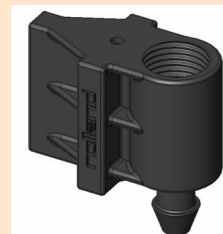
S1006D:= S10 stake + 0.60 m pipe + Connection JCP10D

S1006JR10 = S10 stake + 0.60 m pipe + Connection JR10

S1012J = S10 stake + 1.20 m pipe + Connection JCP10

S1012D = S10 stake + 1.20 m pipe + Connection JCP10D

S1012JR10 = S10 stake + 1.20 m pipe + Connection JR10



### P10

Riser to be used for Rolland sprinkler ref. 6 and 7  
(nozzles > 2.5 mm)

Use connections J and D on drip or PEBD pipes.

Use connection R10 on PEHD pipes

P1006J = P10 riser + 0.60 m pipe + Connection JCP10

P1006D:= P10 riser + 0.60 m pipe + Connection JCP10D

P1006JR10 = P10 riser + 0.60 m pipe + Connection JR10

P1012J = P10 riser + 1.20 m pipe + Connection JCP10

P1012D = P10 riser + 1.20 m pipe + Connection JCP10D

P1012JR10 = P10 riser + 1.20 m pipe + Connection JR10



### P6

Riser to be used for Rolland sprinklers ref. 6 and 7  
(nozzles from 2 to 2.5 mm)

Easy to install on drip pipe or PEBD

P0606J = P6 riser + 0.60 m pipe + Connection JCP6

P0612J = P6 riser +1.20 m pipe + Connection JCP6



### P4

Stake to be used for micro jets with M5 connection.  
To be fitted on galvanised or metal round 4 mm.

Delivered not assembled.

P4 = P4 stake + 0.60 m pipe + Connection JCP4

